

Accessibility at Max Watts

If mobility assistance is required for entering and moving around the venue, or if seating is required for the event, please notify us by contacting management (manager@maxwatts.com.au) prior to the event so our team can provide as much support as possible.

Contact details:

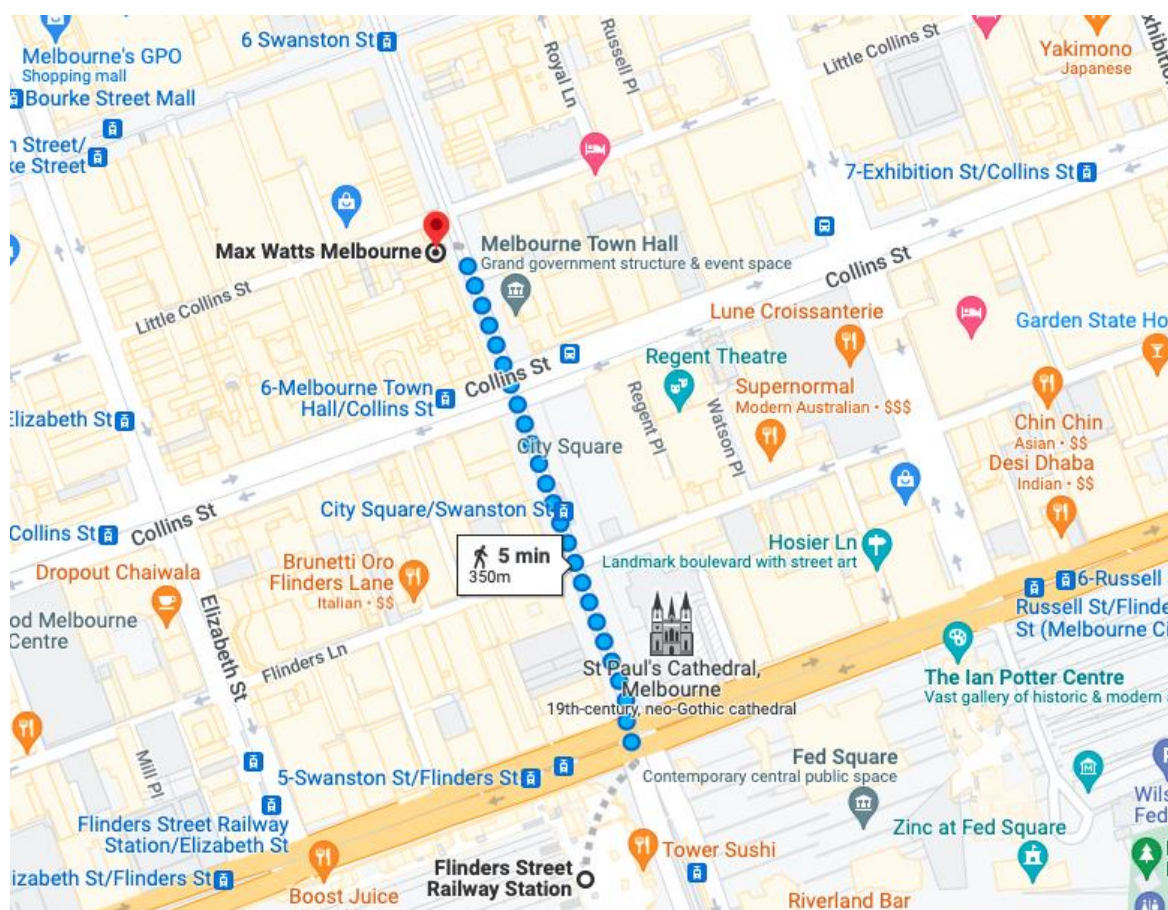
125 Swanston Street, Melbourne, VIC 3000

manager@maxwatts.com.au

Getting to Max Watts:

[From Flinders Street Station accessibility video](#)

Flinders street station is a 5-minute walk from the venue. It is a staffed train station, with wheelchair access, lifts, escalators, part raised and part low platforms, tactile edges, hearing loop, information screens and toilets.



Trams 1, 3/3a, 5, 6, 16, 64, 67, 72 run along Swanston Street. Collins street or Bourke Street stops are nearest to the venue entrance.

Parking:

Nearest Parking (under 2.1m) is QV or Fed Square (End of Russell Street).

Other parking available at 58 Franklin St. (\$10 evening rate from 3.30pm - 5.30am Mon-Fri & \$12 all day rate Sat-Sun) - Open 24/7

There is also a disability parking spot on the Swanston end of Little Collins street

Front Entrance:

Max Watts venue is located on the underground levels of the Century Building. To access venue via stairs please enter Max Watts doors on the left.



For lift accessibility:

Please speak to our Security at the door for access and assistance with the lift. Lift doors are to the right of the venue doors (Century Building glass doors on right)

Ground floor, lift to main room of venue:

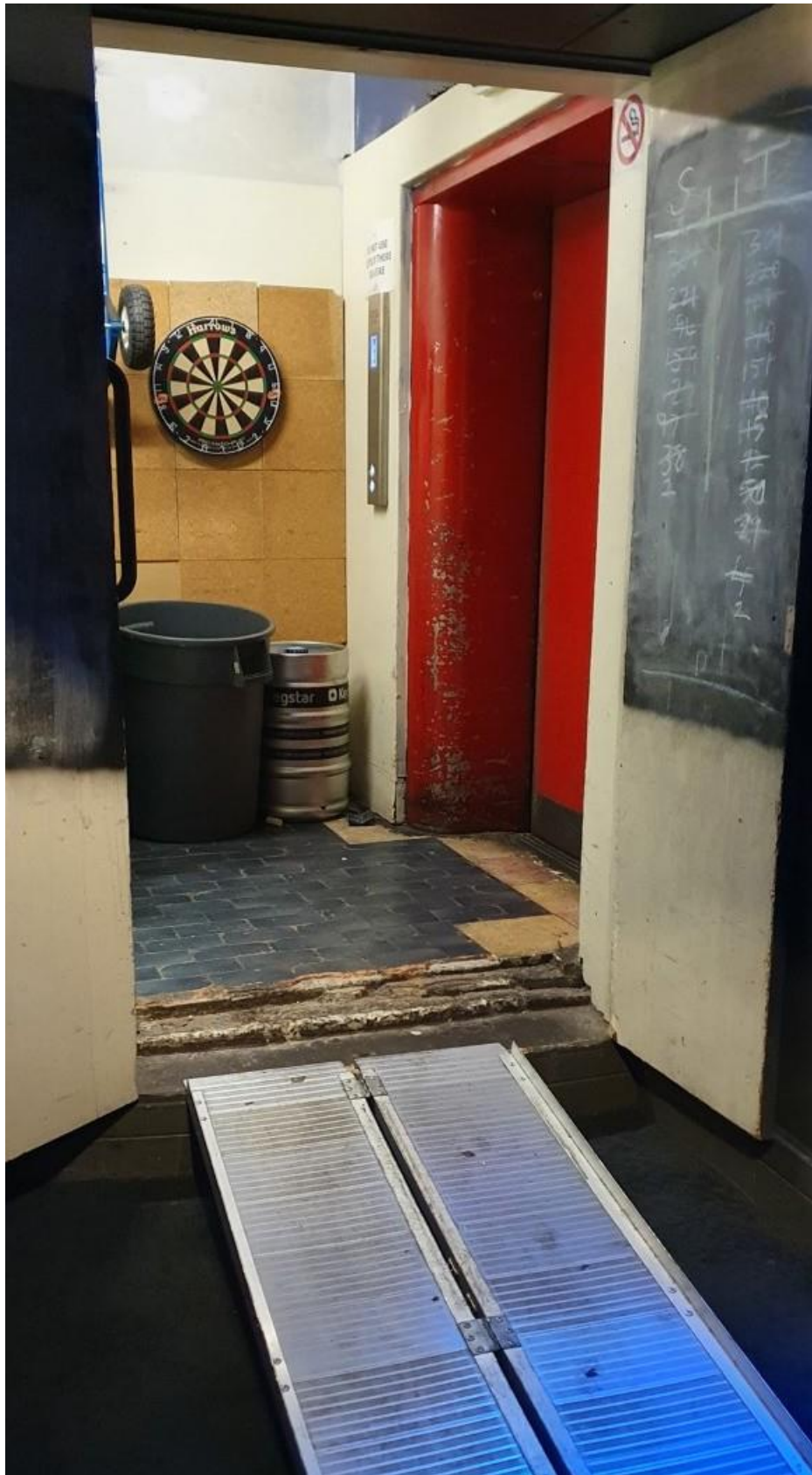


Main room lift accessibility:

Lift room door – 107cm wide

Lift doors – 112cm wide

Portable ramp – 72cm wide



For wheelchair access toilets:

Wheelchair accessible toilet is located on the main floor of the venue, to the left of the stage through stage door. Security will assist with access. Portable ramps are available if required.

Stage door – 112cm

Ramp – 120cm

Toilet door – 97cm



Bathroom entrances on main floor:

Bathroom with urinals and 3 cubicles:
(including one cubicle with hand rail)

Located next to stairs
Doorway - 76cm wide



Bathroom with cubicles only:
(including one cubicle with handrail)

Located opposite stairs
Doorway – 74cm wide



Additional venue information:

Fire/emergency exits: Max Watts has 3 fire exits, two on the main floor and the main entrance as the third.

Companion card holders: Will be issued with free entry when supporting a person with additional needs.

Priority seating: We ask that patrons contact us prior to the event they are attending if they require seating and alert door staff upon arrival so our team can assist in meeting these needs.

Support animals: We request that patrons notify management prior to the beginning of the event where support animals are required to assist them at Max Watts.

Mezzanine floor: The Mezzanine floor of our venue will only be open according to the event/capacity on the night. If the Mezzanine is open, it will be offered first to those who require priority seating.

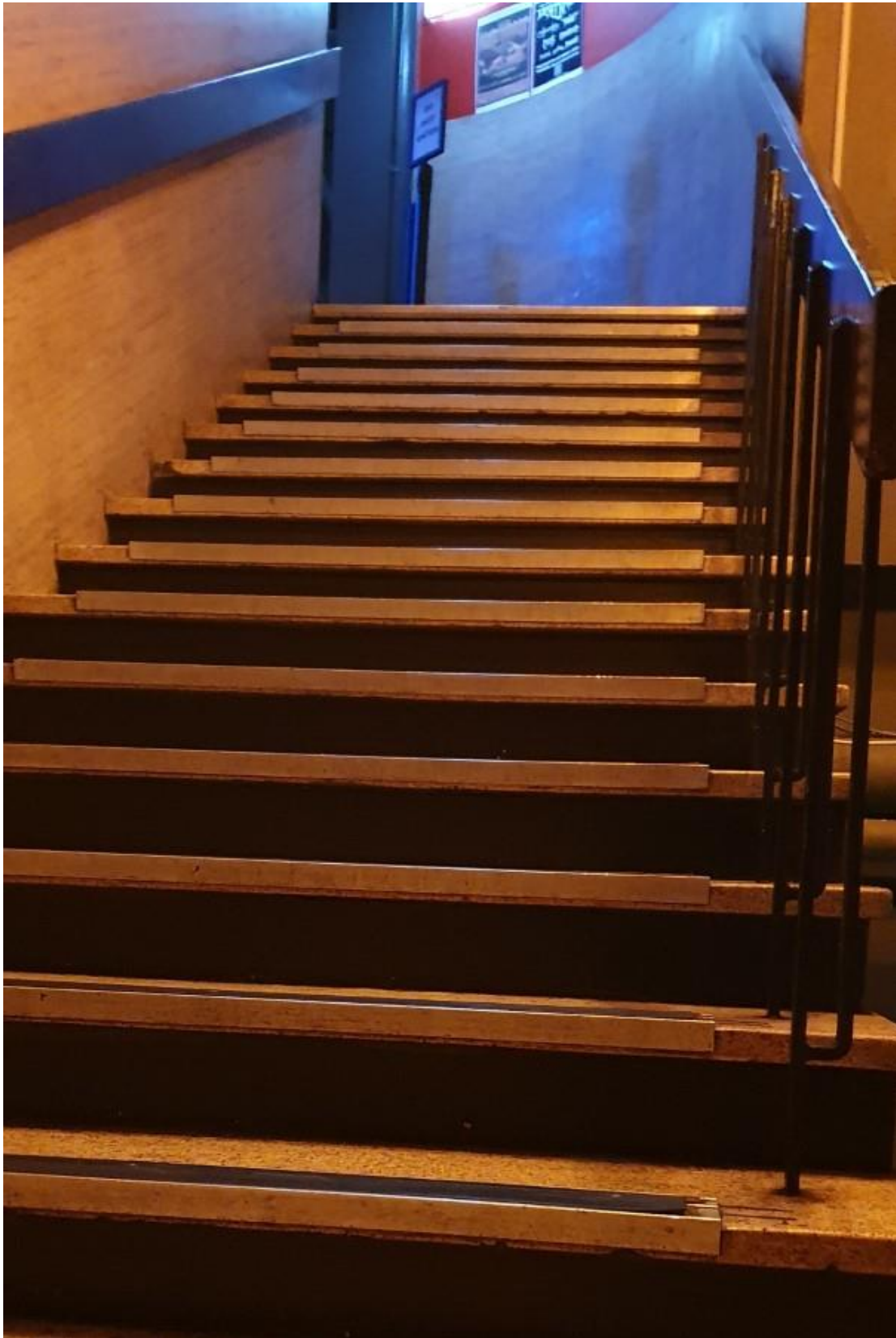
Auslan Interpreters: Max Watts does not currently provide Auslan Interpreters....

Lighting: We wish to advise all patrons that any event may have strobe lighting. For queries regarding this at any specific event, please contact management at manager@maxwatts.com.au

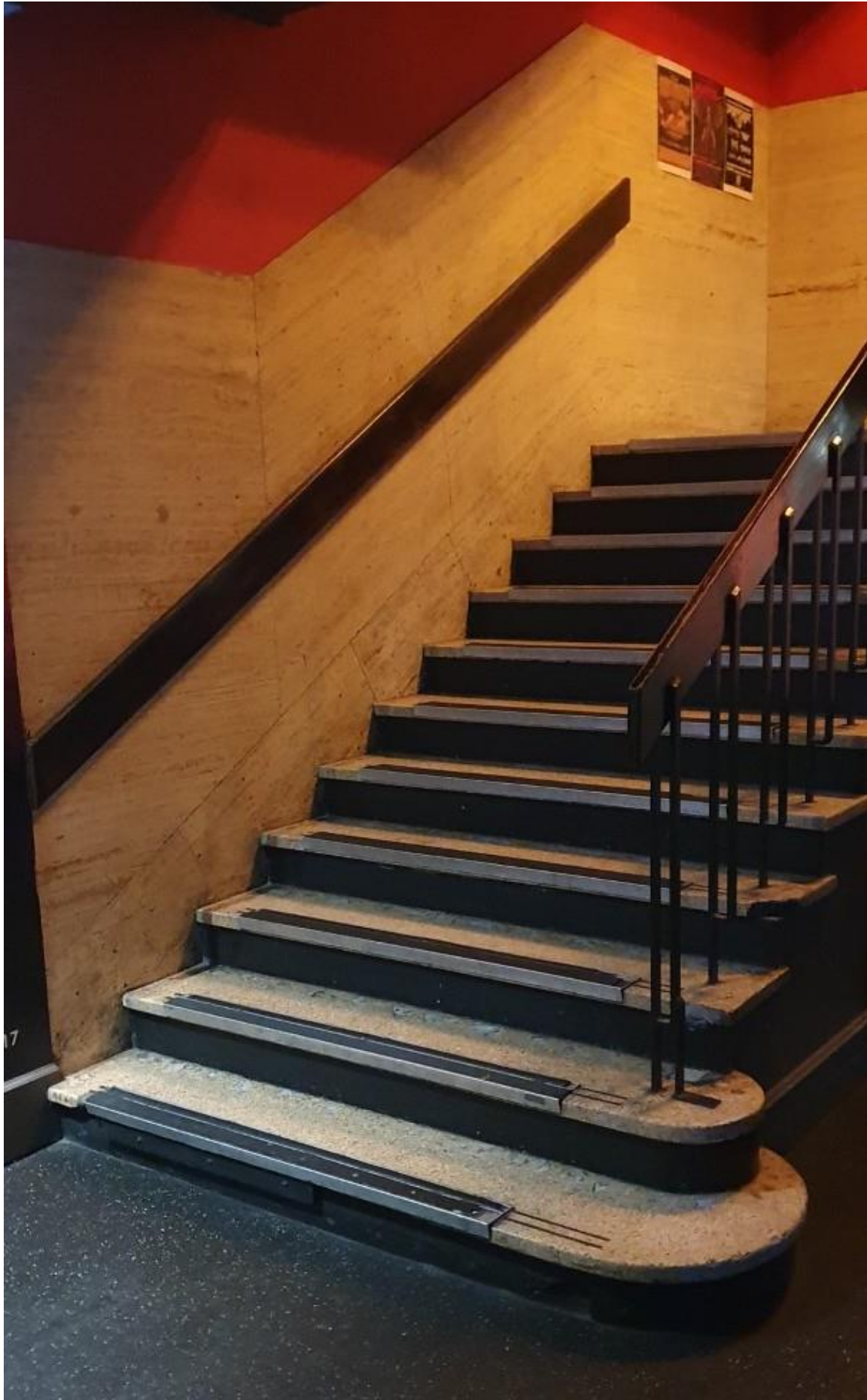
Front Entrance stairs:



First flight of stairs to Main room:



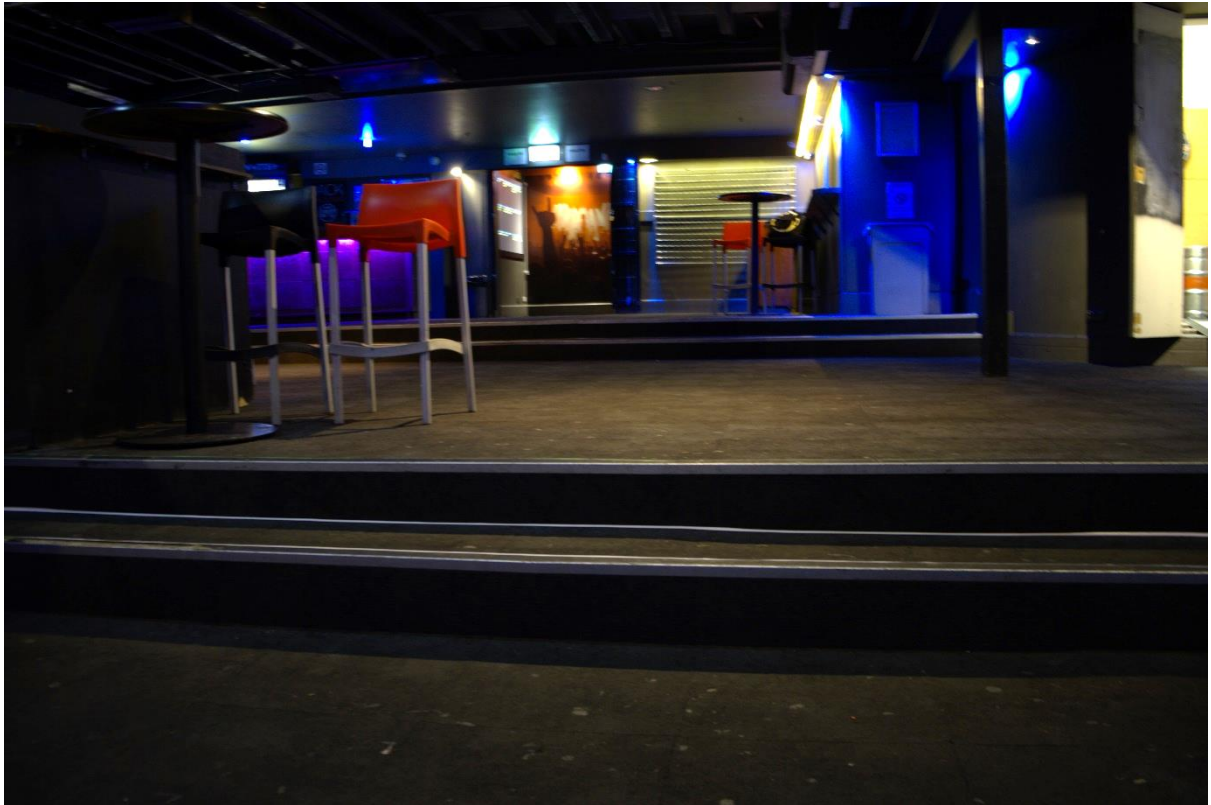
Second flight of stairs to Main room:



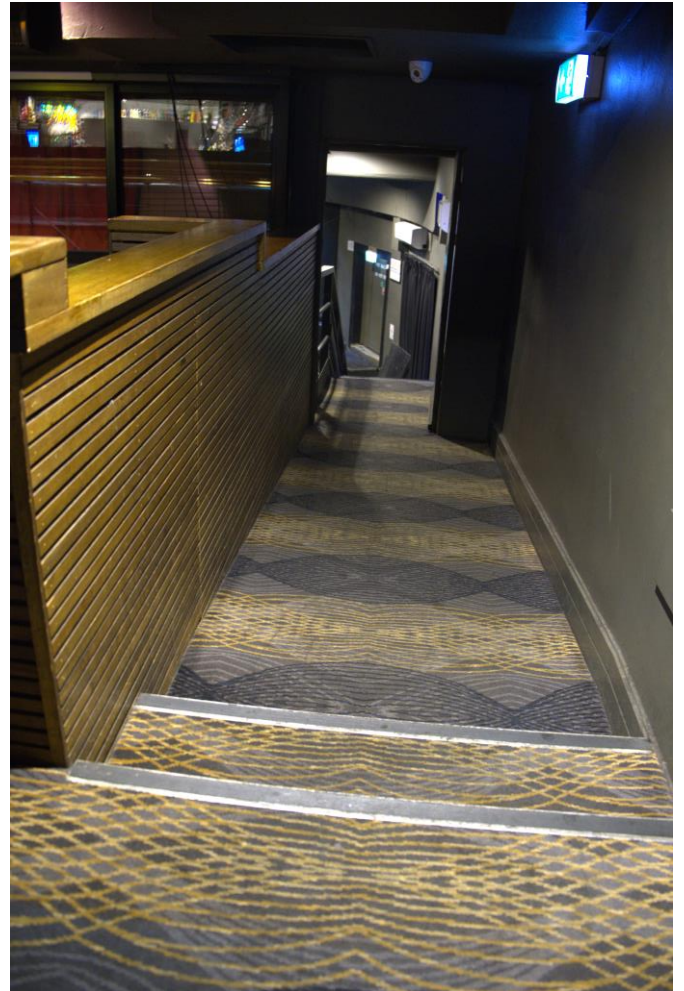
Entrance to Main room:



Main room steps:



Main floor to Mezzanine floor stairs and walkway:



Entrance to Mezzanine floor from front entrance:

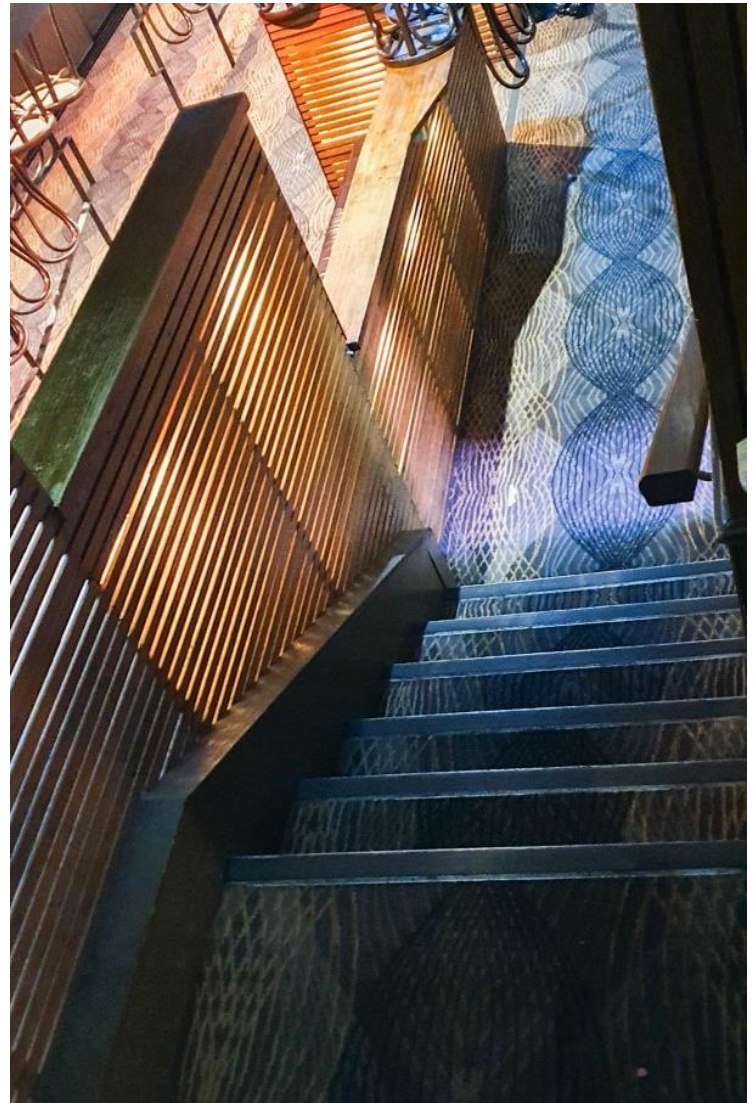


Front entrance stairs to Mezzanine floor:

First flight



Second flight



Steps to Mezzanine seating:



Mezzanine seated area:

